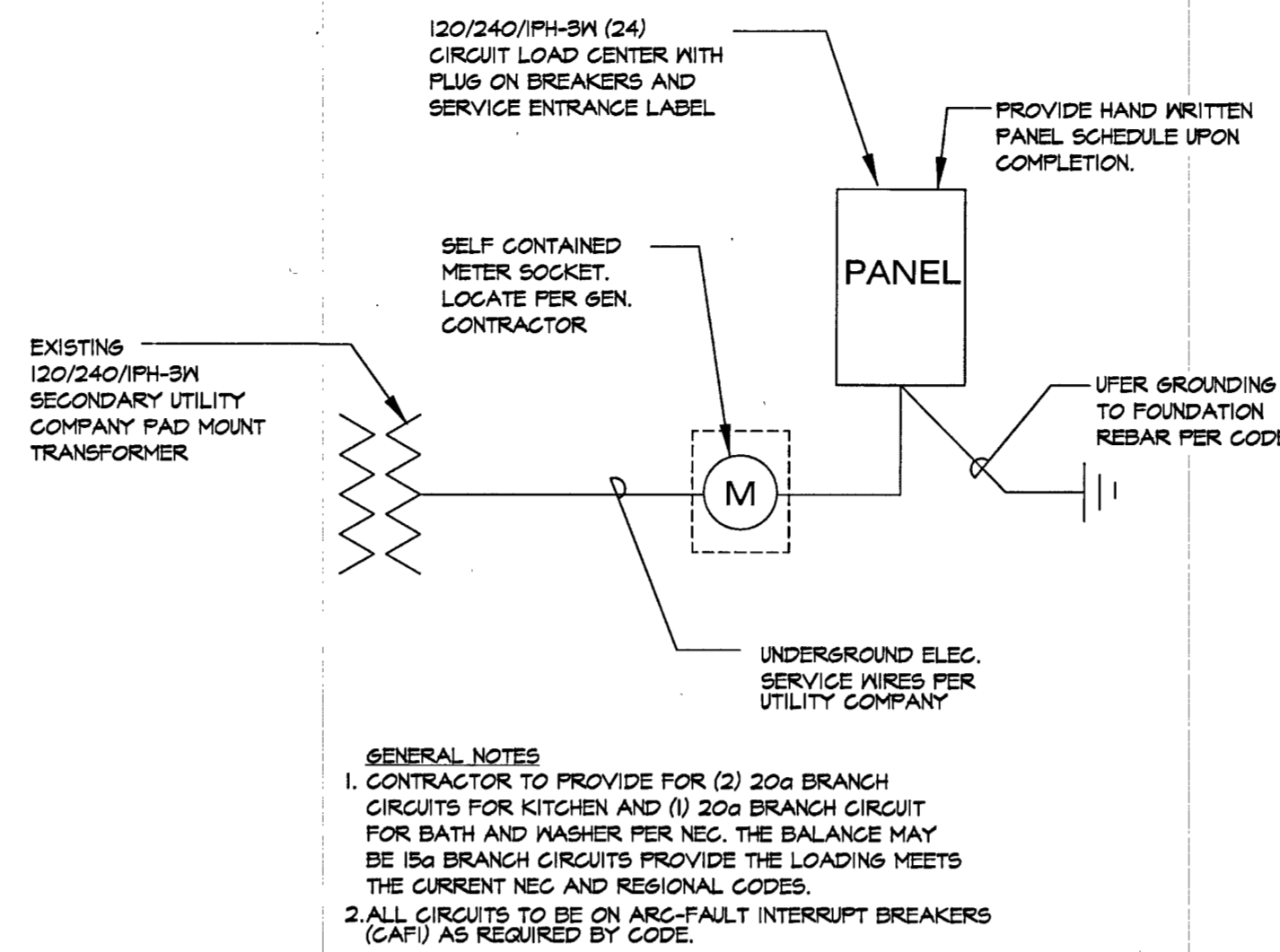


ELECTRICAL FIXTURE SCHEDULE						
TYPE	PICTORIAL	DESCRIPTION & MANUFACTURES CATALOGUE NUMBERS	FINISH	LOCATION	LAMP(S)	
					NO.	TYPE
A		SURFACE MOUNTED NOMINAL 15" DIA. x 7" HIGH INCANDESCENT UNIT WITH BRASS TRIM AND OPAL GLASS DIFFUSER.	NICKEL BROWN OR BRASS	KITCHEN HALL BEDROOMS LAUNDRY	2	26 WATT CFL
B		SURFACE MOUNTED OVER VANITY 3 BULB BAR LIGHT NOM. 18" WIDE	NICKEL OR OAK	BATH	3	26 WATT CFL
C		AIR TIGHT 10 RATED RECESSED CAN LIGHT WITH WHITE TRIM RING - 4" APERTURE APERTURE SIZE: NOMINAL 6" CEILING: GYPSUM BOARD OTHER: WITH THERMAL PROTECTION.	WHITE	KITCHEN	1	26 WATT CFL
D	TBD	FIXTURE TO BE SELECTED BY HOME OWNER CEILING MOUNT	TBD	TBD	TBD	TBD
E		JELLY JAR FIXTURE WITH CLEAR GLASS 4 6/8" ABOVE FINISHED FLOOR OR GRADE	BLACK	EXTERIOR	1	26 WATT CFL
F		AIR TIGHT RECESSED CAN LIGHT - OUTDOOR RATED WITH WHITE TRIM RING WITH SEAL - 4" APERTURE APERTURE SIZE: NOMINAL 6" OTHER: WITH THERMAL PROTECTION.	WHITE	PORCH	1	26 WATT CFL

ELECTRICAL SYMBOL LEGEND	
SYM.	DESCRIPTION
	LIGHT FIXTURE. UPPER CASE LETTER INDICATES TYPE AND NUMBER IS PANEL CIRCUIT.
	SINGLE POLE LIGHT SWITCH MTD AT 48".
	3 WAY SWITCH.
	15A DUPLEX RECEPTACLE NEMA TYPE 5-15R. MOUNT AT 48" UNLESS NOTED.
	20A DUPLEX RECEPTACLE FLUSH MOUNTED IN CEILING FOR FUTURE DOOR OPERATOR.
	15A GROUND FAULT CIRCUIT INTERRUPTER DUPLEX RECEPTACLE.
	15A GROUND FAULT CIRCUIT INTERRUPTER DUPLEX RECEPTACLE. 1/2" W/ WITH WEATHER PROOF COVER. MOUNT AT 41-24".
	30A 3 POLE, 3 WIRE RECEPTACLE. NEMA TYPE 10-30R. (FOR DRYER).
	40A 2 POLE BREAKER, 10/3 WIRE (RANGE OUTLET)
	PLUMBITION FOR DOOR CHIME. PROVIDE 2 1/2 LOW VOLTAGE CABLE TO CHIME.
	ELECTRIC DOOR CHIME WITH TRANSFORMER.
	WALL MOUNTED TELEPHONE OUTLET MOUNT AT 48" UNLESS NOTED.
	TELEVISION OUTLET MOUNT AT 48" UNLESS NOTED.
	MOTOR DISCONNECT SNAP SWITCH WITH THERMAL OVERLOAD MTD @ MOTOR.
	CEILING MOUNTED 120V PHOTOELECTRIC SMOKE DETECTOR HARDWIRED, INTERCONNECTED WITH BATTERY BACKUP.
	CARBON MONOXIDE DETECTOR.
	EXHAUST FAN

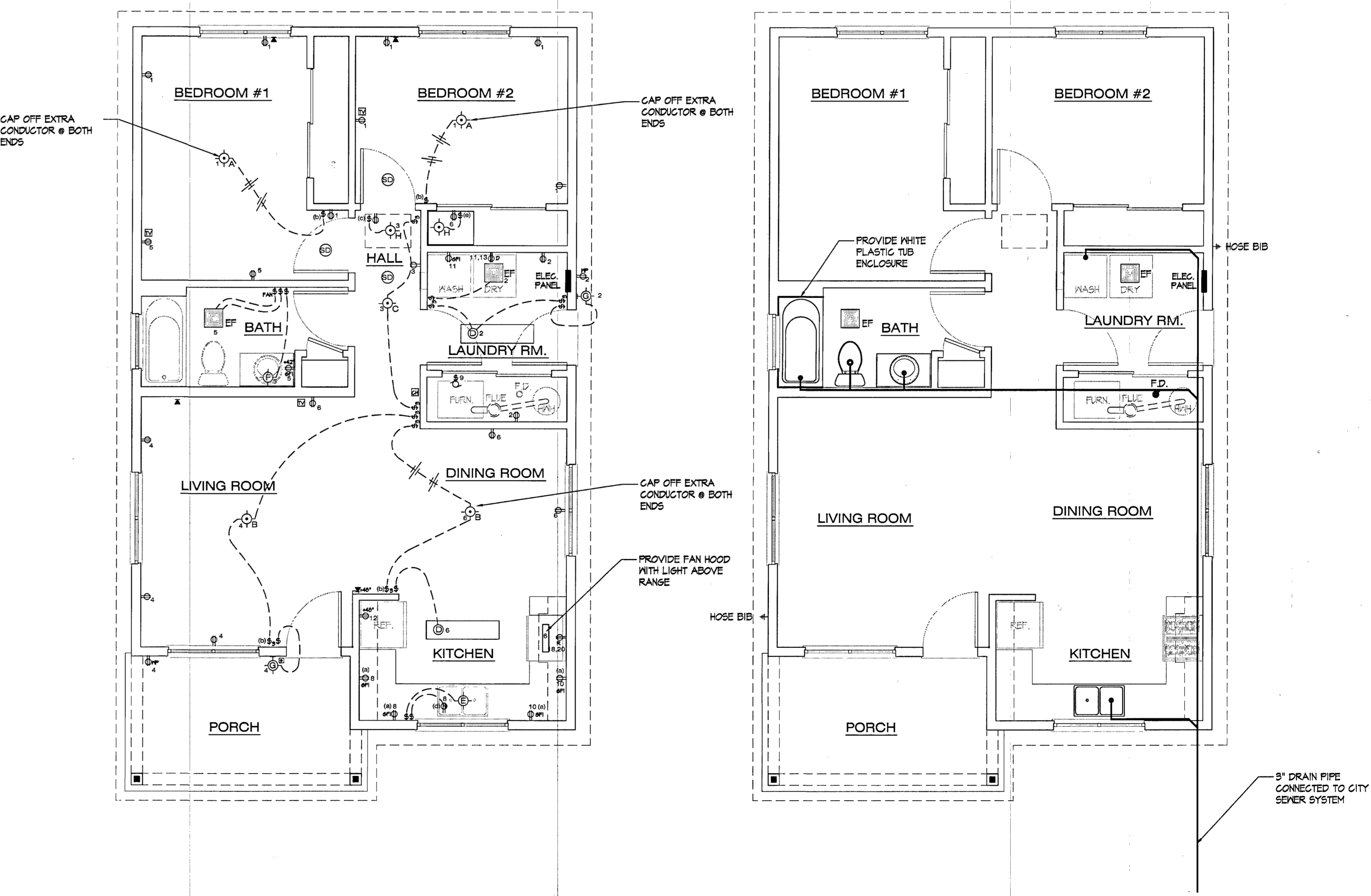
NOTES:
 (1) 20A CIRCUITS TO BE MOUNTED ABOVE COUNTER.
 (2) PROVIDE SINGLE GANG BOX WITH A SINGLE SWITCH - RUN 14/3 WIRE AND CAP EXTRA CONDUCTOR FOR FUTURE CEILING FAN.
 (3) PROVIDE CIRCUIT UNDER COUNTER IN HALL FOR FUTURE DISHWASHER HOOK-UP.
 (4) PROVIDE SPLIT WIRE DUPLEX RECEPTACLE BELOW COUNTER FOR WASTE DISPOSER.
 (5) PROVIDE SWITCH RECEPTACLE AND FIXTURE SPECIFIED IN CRAWL SPACE, LOCATE ADJACENT TO ACCESS PANEL.



- GENERAL ELECTRICAL AND PLUMBING NOTES:
- ALL SMOKE DETECTORS TO BE A/C WIRED IV BATTERY BACKUP & INTERLINK.
 - ALL ELEC. SYSTEMS TO COMPLY WITH LATEST EDITION OF THE NATIONAL ELECTRIC CODE AND ANY LOCAL CODES THAT MAY HAVE JURISDICTION.
 - RANGE AND DRYER ARE TO BE PROVIDED WITH GAS CONNECTIONS PER PPHFH REQUIREMENTS.
 - PROVIDE SOLID BLOCKINGS IN LIVING ROOM, DINING ROOM, AND BEDROOM CEILINGS FOR FUTURE INSTALLATION OF CEILING FANS.
 - WATER SERVICE TO INCLUDE THE PROVISION OF A MINIMUM OF ONE (1) EXTERIOR HOSE BIBS LOCATED AS SHOWN ON THE DRAWINGS.

THIS SHEET FOR REFERENCE ONLY

1 SINGLE LINE DIAGRAM
 EP1 SCALE: 1/4" = 1'-0"



2 ELECTRICAL PLAN
 EP1 SCALE: 1/4" = 1'-0"

3 PLUMBING PLAN
 EP1 SCALE: 1/4" = 1'-0"

DATE:	02.16
REVISIONS:	
NO.	DA
CHECKED:	J
DRAWN BY:	CAY / J
FILE NAME:	2201 SHEET EP1
COPYRIGHT ©	20
SHEET NO.	