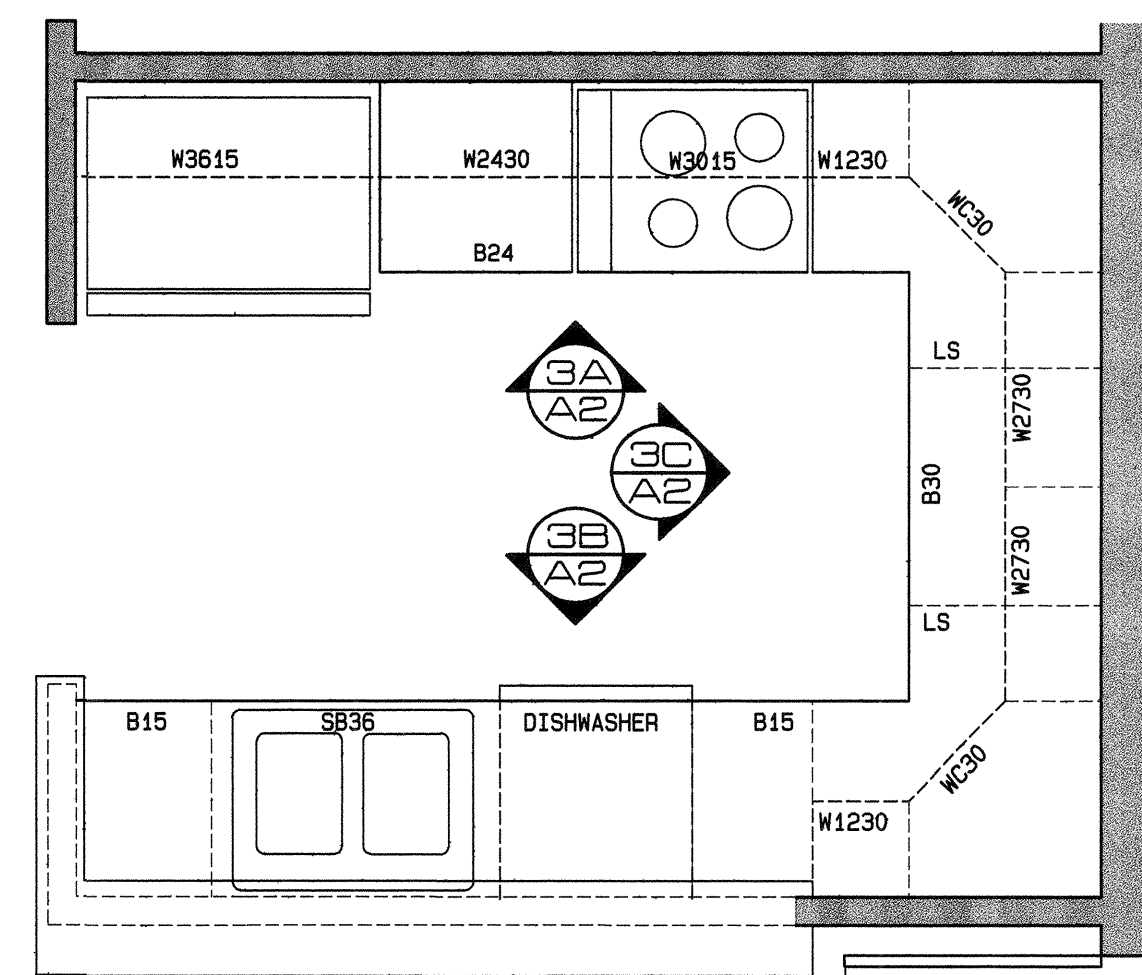


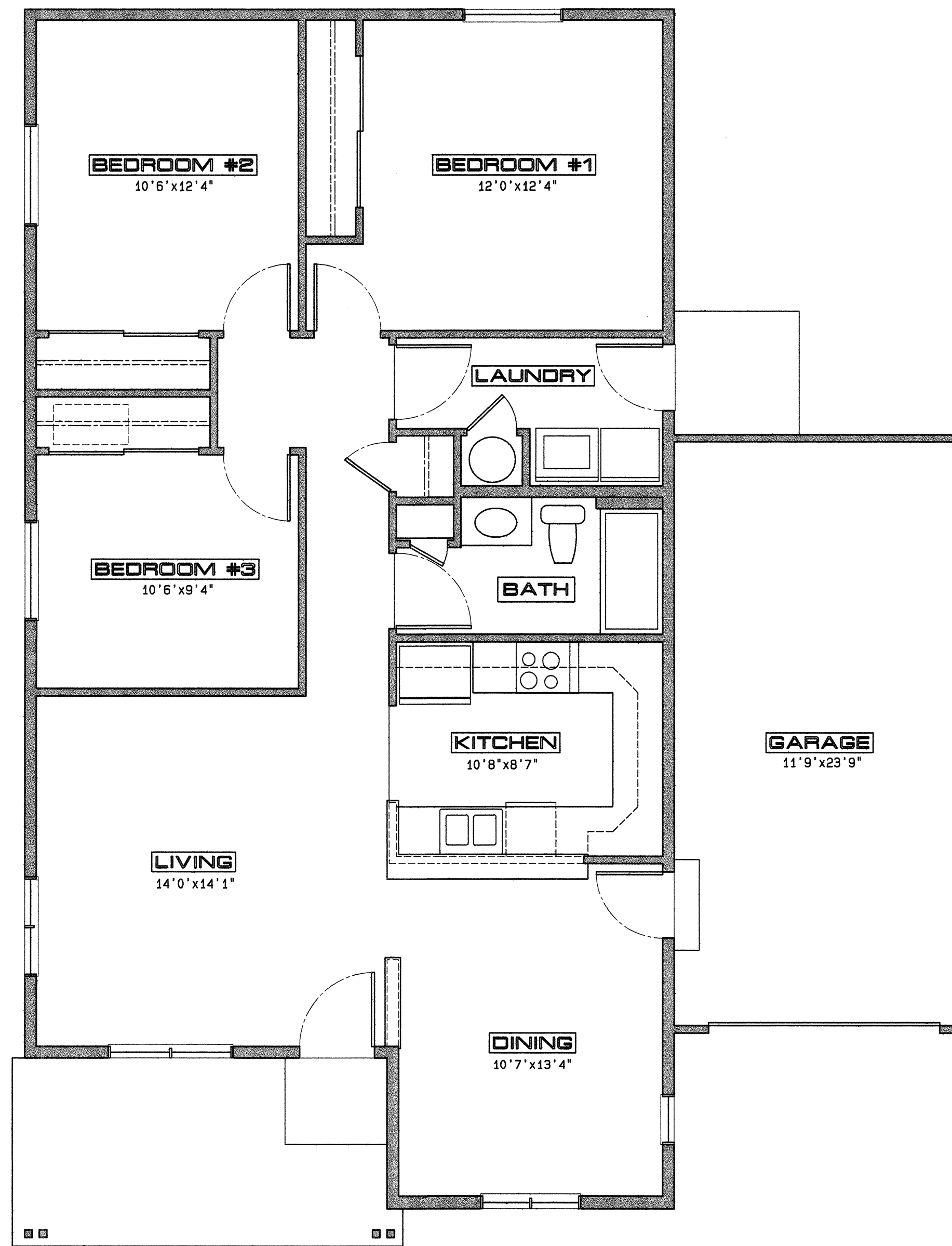
3 KITCHEN ELEVATIONS
A2 1/2" = 1'-0"



2 KITCHEN PLAN
A2 1/2" = 1'-0"



4 FRONT ELEVATION
A2 1/4" = 1'-0"



1 FLOOR PLAN
A2 1/4" = 1'-0"

1161 S.F.



PIKES PEAK
HABITAT FOR HUMANITY

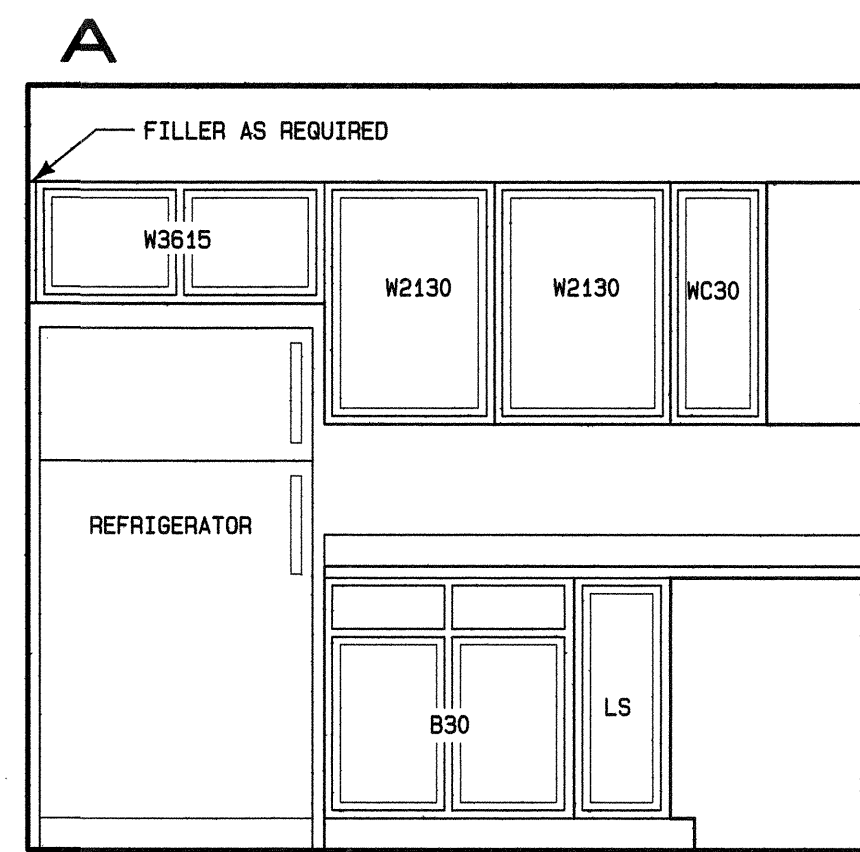
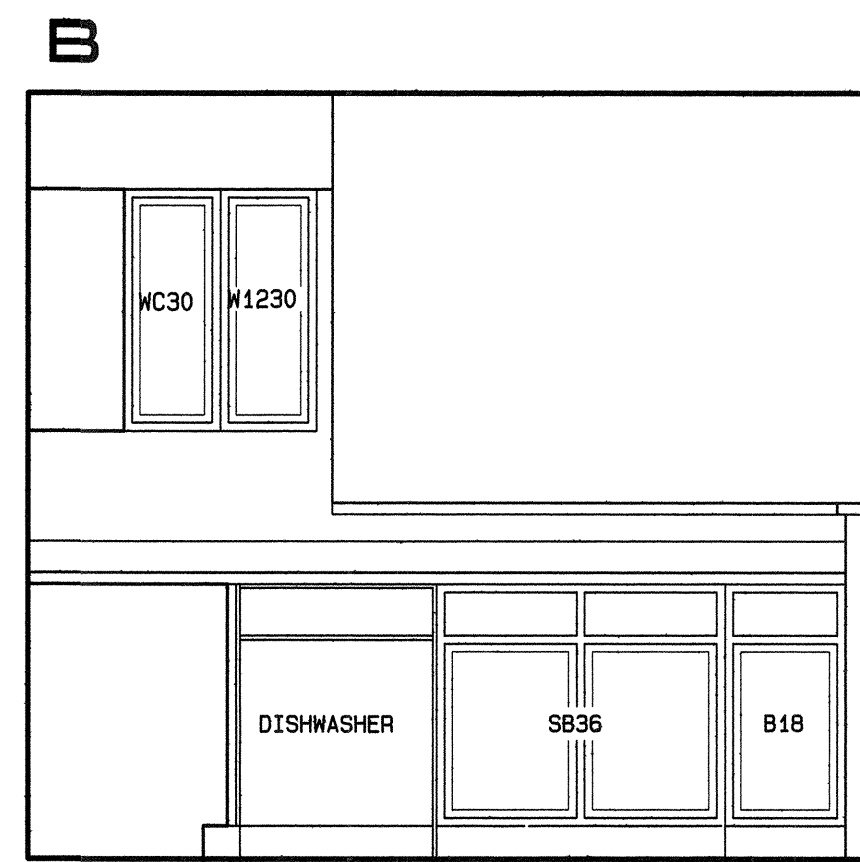
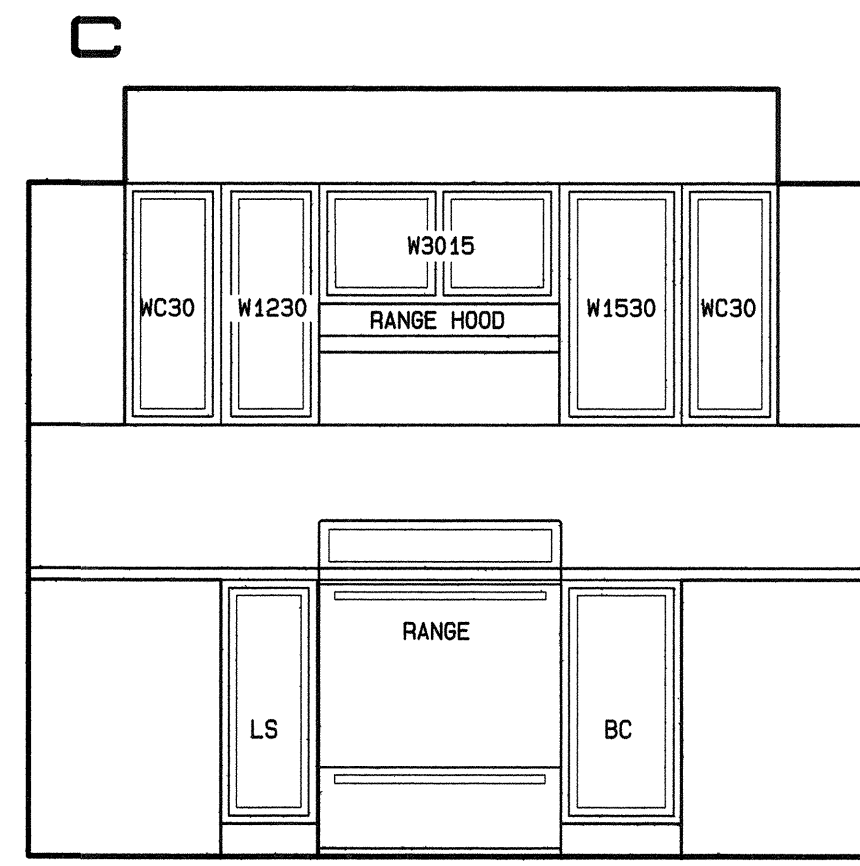
ISSUE

PROJECT

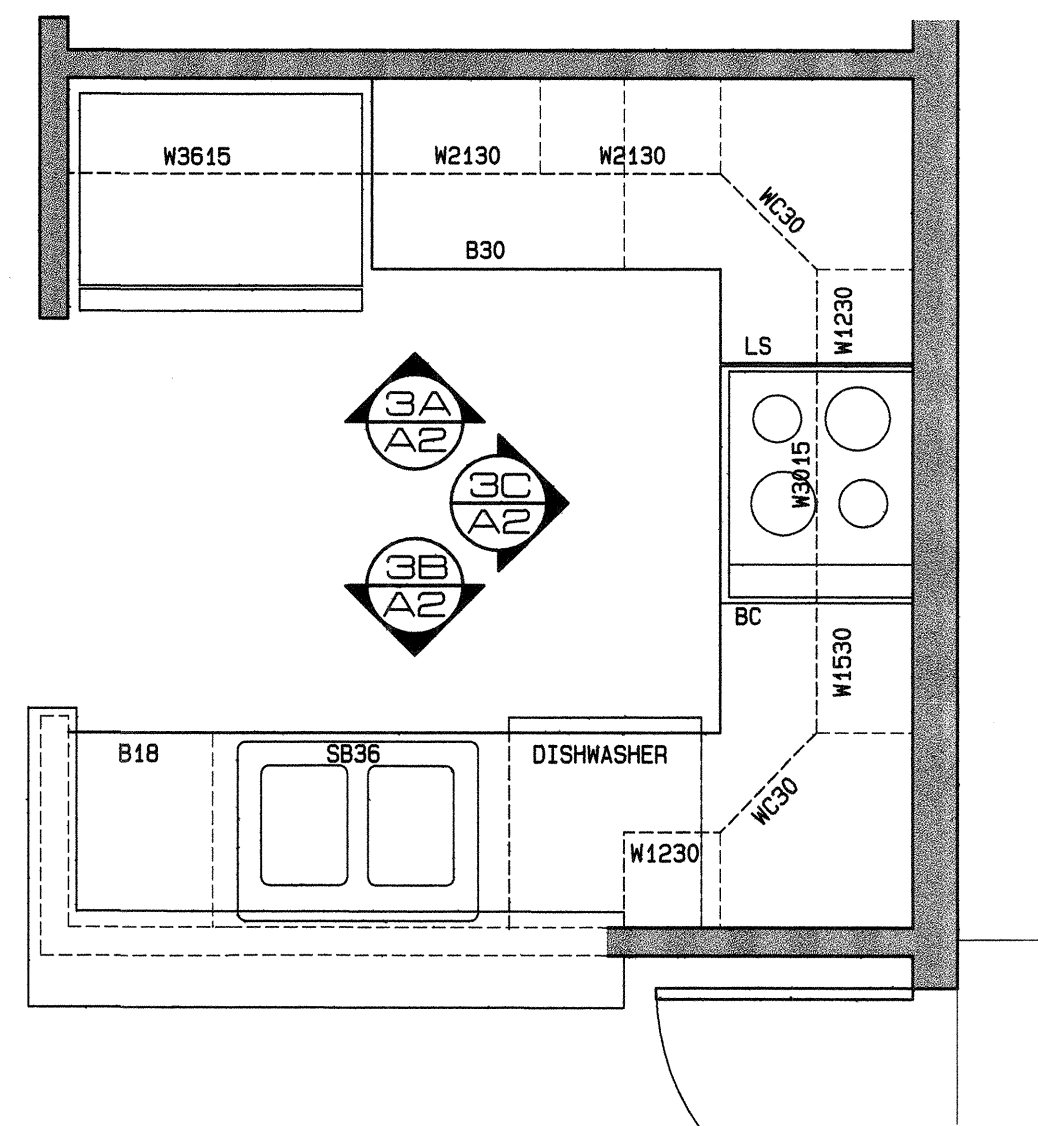
DRAWN BY
STEVEN RISLEY
SHEET TITLE

SHEET NUMBER

A2



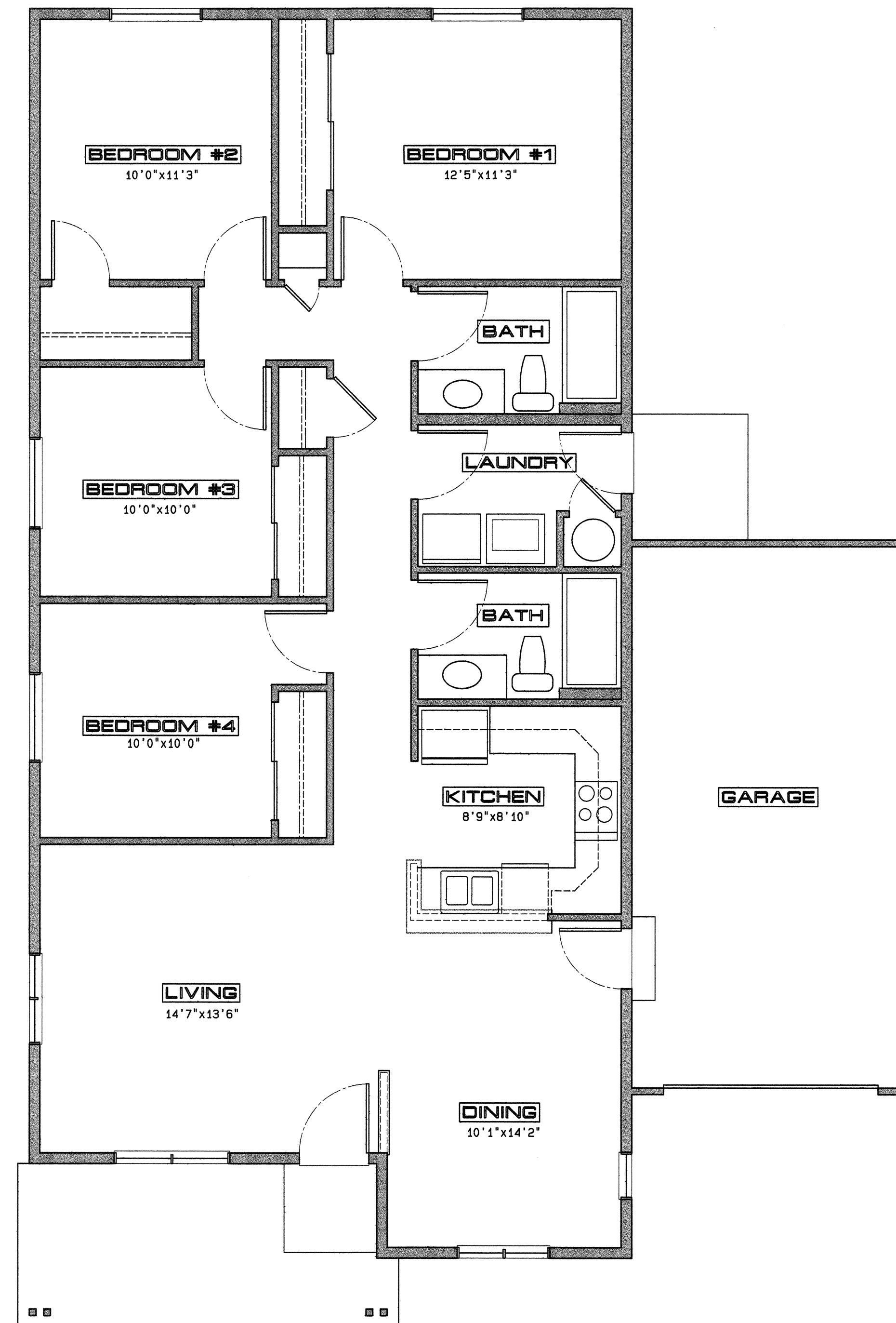
3 KITCHEN ELEVATION
A2 1/2" = 1'-0"



2 KITCHEN PLAN
A2 1/2" = 1'-0"



4 FRONT ELEVATION
A2 1/4" = 1'-0"



1 FLOOR PLAN
A2 1/4" = 1'-0"

1344 S.F.



PIKES PEAK
HABITAT FOR HUMANITY

ISSUE

PROJECT

DRAWN BY
STEVEN RISLEY

SHEET TITLE

SHEET NUMBER

A2